



## JSW THE JAPAN STEEL WORKS, LTD.

URL <http://www.jsw.co.jp/>

Division Gate City Ohsaki-West Tower, 11-1, Osaki 1-chome, Shinagawa-ku,  
Head Quarter: Tokyo 141-0032, Japan  
Phone: +81-3-5745-2081 Fax: +81-3-5745-2083~84  
URL [http://www.jsw.co.jp/inj\\_f/inj\\_index.htm](http://www.jsw.co.jp/inj_f/inj_index.htm)

### JSW Plastics Machinery Inc.

Head Office: 555 South Promenade Ave., Unit 104, Corona, California 92879, U.S.A.  
Phone: +1-951-898-0934 Fax: +1-951-898-0944  
Chicago Office: 540 Capital Drive, Suite 130, Lake Zurich, Illinois 60047, U.S.A.  
Phone: +1-847-550-0704 Fax: +1-847-550-0725  
Detroit Office: 24300 Catherine Industrial Drive, Suite 403, Novi, Michigan 48375, U.S.A.  
Phone: +1-248-308-2822

### The Japan Steel Works (Singapore) Pte. Ltd.

17 Gul Lane 629413 Singapore  
Phone: +65-68614511 Fax: +65-68623166

### PT. JSW Plastics Machinery Indonesia

Gajah Building Unit K, Jl.Dr.Saharjo No.111 Tebet, Jakarta  
Selatan 12810, Indonesia  
Phone: +62-21-8370-2536 Fax: +62-21-829-8264

### JSW Plastics Machinery (Philippines) Inc.

Unit 802 Alabang Business Tower, 1216 Acacia Avenue, Madrigal  
Business Park Alabang Muntinlupa City Metro Manila 1771, Philippines  
Phone: +63-2-478-2533 Fax: +63-2-809-6221

### JSW Plastics Machinery (M) SDN. BHD.

D6-5-G, (Ground Floor), Block D6, Pusat Perdagangan Dana 1,  
Jalan Pju 1A/46, 47301, Petaling Jaya, Selangor Darul Ehsan, Malaysia  
Phone: +60-3-78426076 Fax: +60-3-78426078

### The Japan Steel Works (Thailand) Co., Ltd.

78/6 JST Building 4th Fl., Moo 7 King Kaew Road, Rachatewa,  
Bangplee, Samutprakarn 10540 Thailand  
Phone: +66-2-738-5272 Fax: +66-2-738-5277

### JSW Plastics Machinery Vietnam Ltd.

Room103, Techno-Center Thang Long Industrial Park Dong Anh District,  
Hanoi, Viet Nam  
Phone: +84-4-3951-6383 Fax: +84-4-3951-6384

### JSW Plastics Machinery (H.K.) Co., Ltd.

Room 907, Corporation Park, 11 On Lai Street, Shatin N.T., Hong Kong  
Phone: +852-2648-0720 Fax: +852-2686-8204

### JSW Injection Machine Maintenance (Shenzhen) Co., Ltd.

1F, YiBen Electronic & Business Industrial Park, No.1063 Chaguang  
Road, Xili Town, Nanshan District, Shenzhen City, Guangdong Province,  
518055, People's Republic of China  
Phone: +86-755-8602-0930 Fax: +86-755-8602-0934

### JSW Machinery Trading (Shanghai) Co., Ltd.

28A, Strength Plaza, No.600-4, Tianshan Road, Shanghai, 200051,  
People's Republic of China  
Phone: +86-21-5206-7031 Fax: +86-21-5206-7033

### JSW Plastics Machinery (TAIWAN) Corp.

Head Office: 1F., No.21, Da Hu 1st Road, Guieshan Shiang Taoyuan Country 33373  
Taiwan, R.O.C.  
Phone: +886-3-396-2102 Fax: +886-3-396-2104  
Tainan Office: 15F.,-7, No.689-78, Xiaodong Road, Yongkang City, Tainan Country  
71052 Taiwan, R.O.C.  
Phone: +886-6-311-4192 Fax: +886-6-311-4193

### Japan Steel Works India Private Limited

611, Time Tower, MG Road, Sector 28,  
Gurgaon, haryana, 122001, India  
Phone: +91-124-469-4444, Fax: +91-124-469-4433



### JST ENGINEERING CO., LTD.

78/6 MOO 7 KING KAEW RD., RACHATEWA,  
BANGPLEE, SAMUTPRAKARN 10540 THAILAND.

TEL: +66 (0) 2738 5050-4 URL: [www.jst.co.th](http://www.jst.co.th)

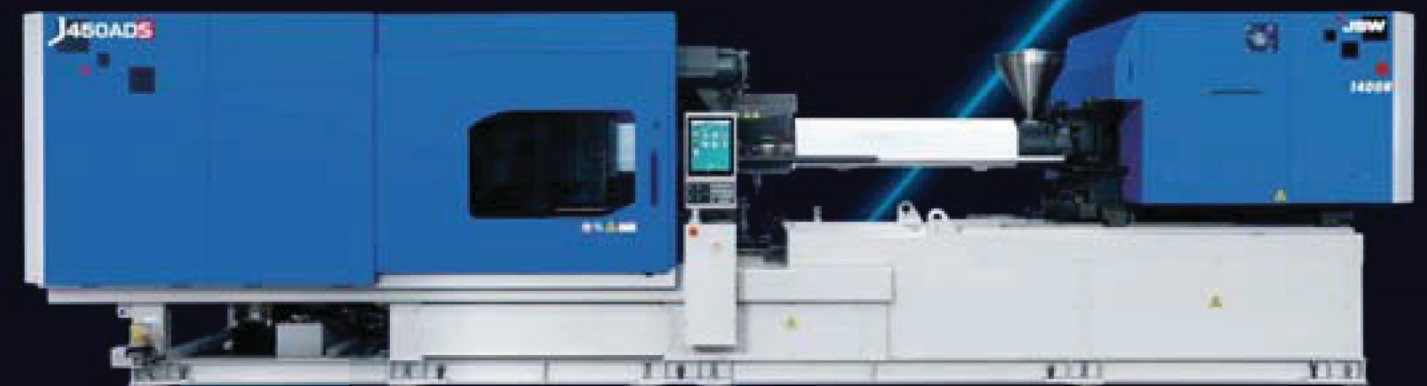
FAX: +66 (0) 2738 5055 LINE ID: @jst.co.th

E-mail: [info@jst.co.th](mailto:info@jst.co.th) www.facebook.com/jst.co.th

Printed in Japan HO,AE,JD,BJ,C

# JADS SERIES

All Electric Servo Drive  
Injection Molding Machine



Model

J220ADS | J280ADS | J350ADS | J450ADS

JSW



JQA-QMA13993  
JQA-EM6416

# The results of four generations of accomplishments and new technologies-J-ADS

**JADS** SERIES  
All Electric Servo Drive  
Injection Molding Machine

## Providing the maximum safety to all of our customers

### AD Strong

**Clamping Unit** Lightweight high rigidity, low vibrations  
Longer mold life  
Reduced grease use for cleaner machine  
Clamping force feedback  
Reduction in mold maintenance costs

### AD Stable

**Injection Unit** New designed energy saving barrel  
New proposals for screw technologies  
Stabilization of molded parts  
JSW original recovery functions  
Wide selection of injection unit to customer needs

### AD Smart

**Controller** Function enrichment with simple operation  
Simple display of process parameters  
Molding condition memo  
I/O customized function

### AD Support

**Energy-saving/maintenance** Energy-saving function  
Power consumption monitor  
Supporting reduction in power consumption  
Both predictive and preventive maintenance



※ Hydraulic unit is optional



Complying with safety regulations Industrial  
machinery  
Industry safety rules (JIMS K1001)



—Premier quality in the industry

# ADStrong

## Clamping Device

**JADS** SERIES  
All Electric Servo Drive  
Injection Molding Machine

**Rigid clamping device manufactured utilizing JSW's expertise in materials technologies. Produced from raw materials, is effective in assuring stable production.**

### Clamping Device

- Lightweight high rigidity, low vibrations
- Longer mold life
- Reduced grease usage for cleaner operation
- Promoting proprietary manufacturing
- Flat press platen Chapter 2

### Friendly to Molds

- Clamping force monitoring
- Clamping force feedback
- Reduction of mold maintenance costs
- Monitoring both mold open and close, and ejection process

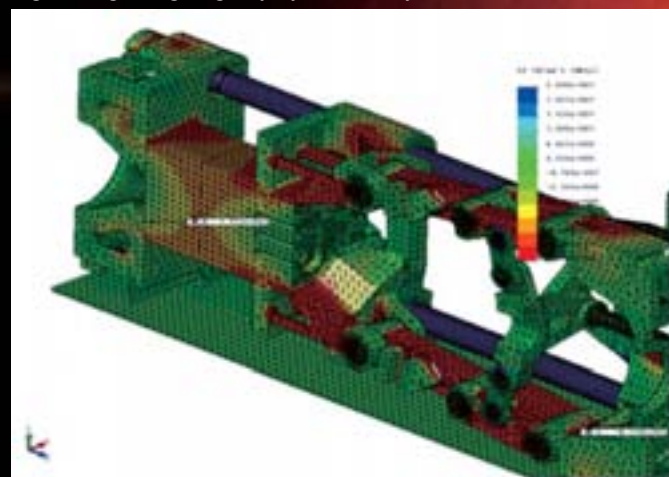
### Mold Protection

- Simple auto setting
- Adjusts with mold temperature variations
- Molding-open monitoring, ejector monitoring

Bushingless movable platen by adoption of linear guides



Light-weight/high rigidity by FEM analysis



Mountable for Large-sized Mold

	J220ADS	J280ADS	J350ADS	J450ADS
Mold Height Min. – Max.	230~680	250~720	300~770	350~900
Tie Bar Distance (H x V)	650×590	730×630	810×730	900×810

(Unit: mm)



—JSW proprietary development

# ADStable

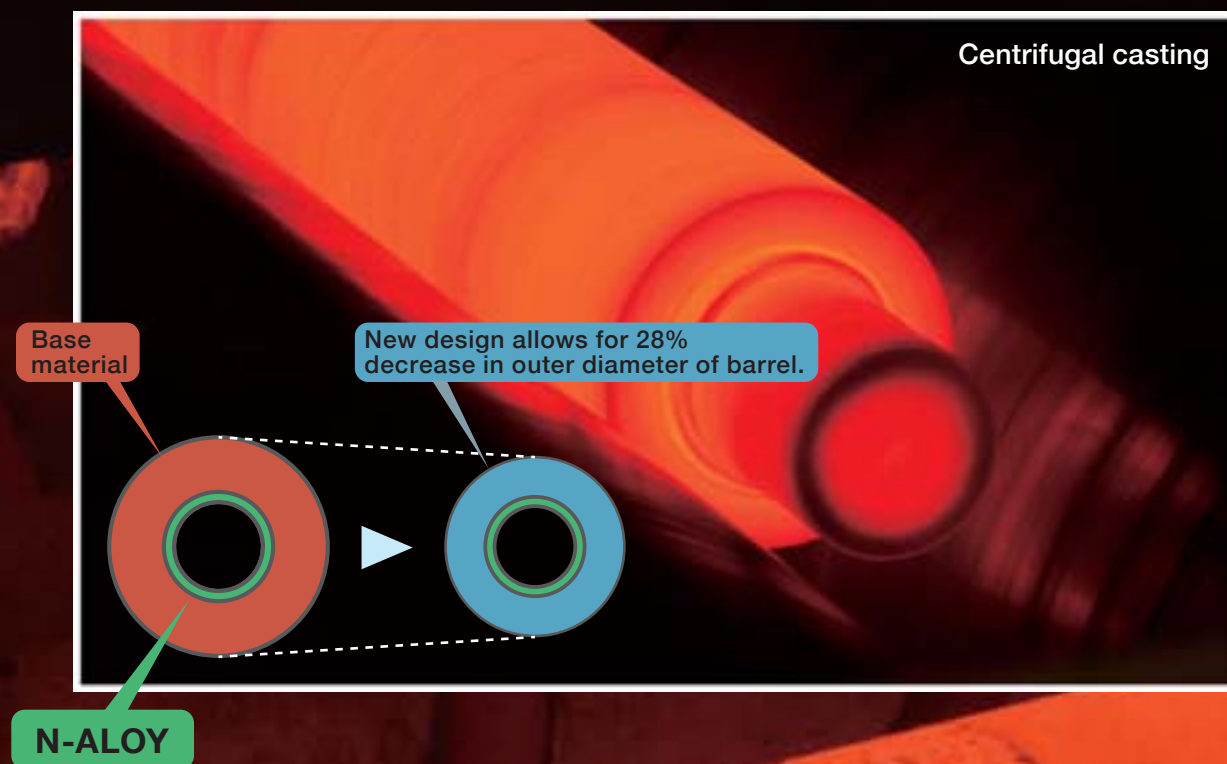
## Injection Unit

**JADS** SERIES  
All Electric Servo Drive  
Injection Molding Machine

The high precision measuring control and the screw variation response to every molding

### New designed energy saving barrel

Reduced running cost, Shorter heat-up time



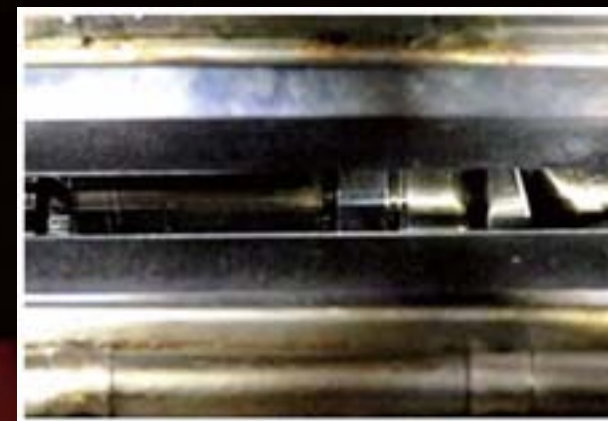
### New proposal for the screw technologies

- Design • Manufacturing
- Materials • Research and development (R&D)

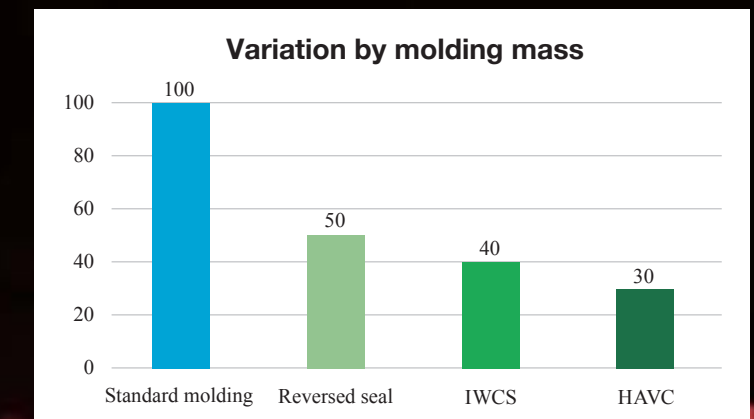


### Stabilization of molding component Original measuring technology

Actual cut away view of barrel



Recovery stabilization control  
(HAVC > IWCS > Reversed seal)



### Wide module selection in response to the needs

	Injection unit	Screw diameter (mm)	Injection pressure (MPa)	Standard unit Max. injection speed (mm/s)	High speed unit Max. injection speed (mm/s)	Extended hold time Max. injection speed (mm/s)
J220ADS	300H	40	250	240	330	160
		46	189			
		51	154			
J280ADS	460H	46	234	160	300	160
		53	177			
		58	147			
J350ADS	890H	58	229	160	270	120
		66	177			
		72	149			
J450ADS	1400H	66	241	160	300	160
		76	182			
		84	149			
	2300H	84	190	160		160
		92	158			



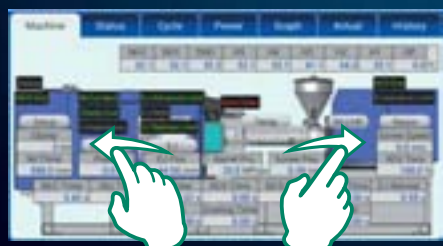
— Improvement for operability/ visibility

# ADSmart Controller

## Function enrichment by a simple operation

### Main characteristics of SYSCOM5000i

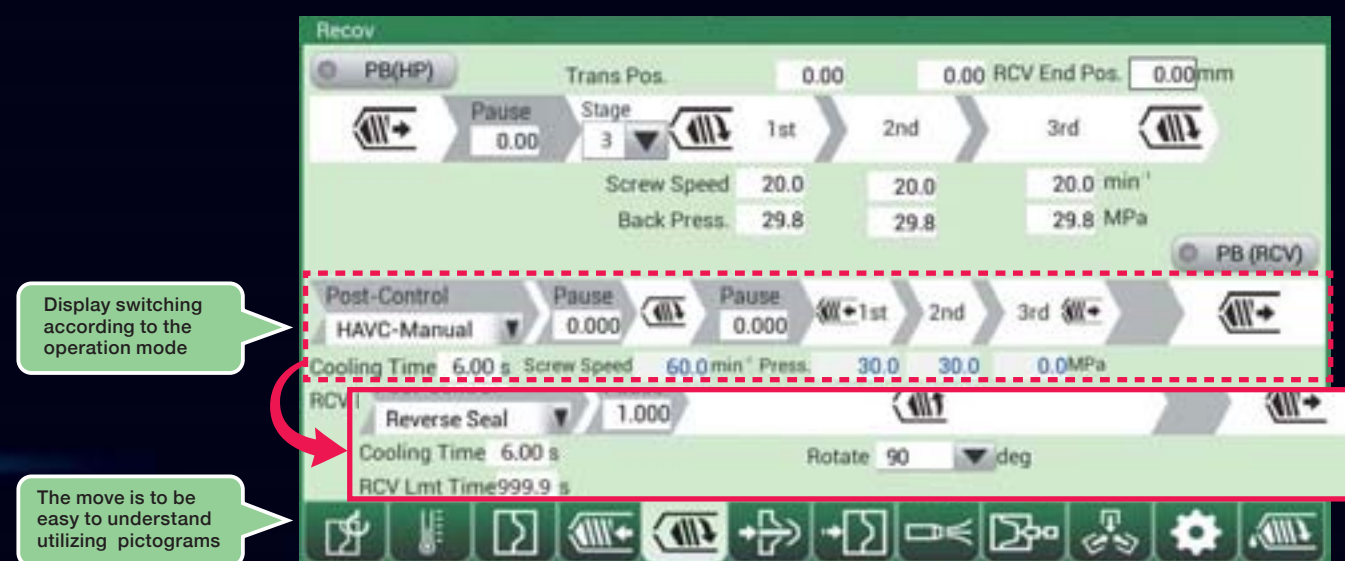
- Large 15" display utilizing energy savings LED technology
- Improvement for visibility by expanding the setting screen
- Agile multi-touch operation
- Simple operation lever switch
- On screen instruction manual



## Enriched advanced function-mounted new controller SYSCOM 5000i

## Easy to understand operation process display

Screen layout shows process sequence in each operation on mode.



## With further convenient functions



### Molding condition memo

Together with the molding conditions, the caution memo in molding and setting of the peripheral systems, and the image of molding components are able to be saved.

### Maintenance memo

The history of the molding machine maintenance is able to record on the controller. The periodical inspection items and the execution history can be checked on the controller.



### I/O customized function

I/O signals can be designed on screen.

- (1) Mold opening completed
- (2) Take-out instruction to the ejector
- (3) Take-out from the ejector, and receives the completed pulse signal
- (4) Clamping start  
3-sec. operation of the belt conveyor



—Enriched support

# ADSupport

## Energy-saving/maintenance

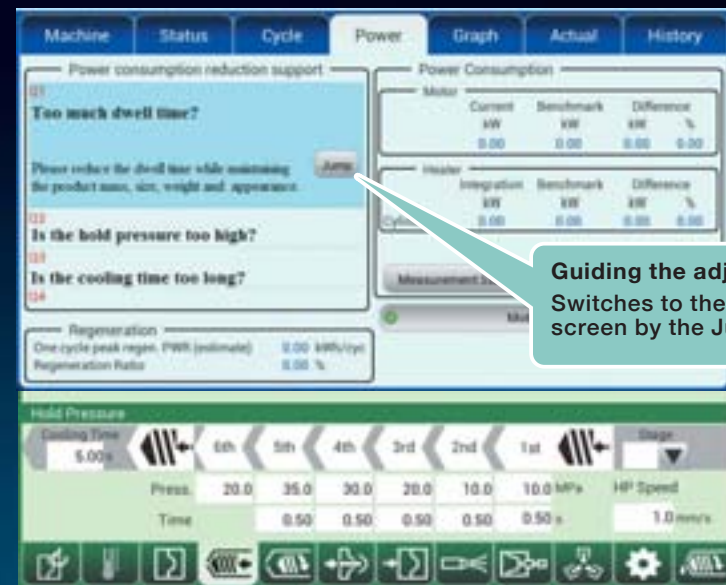
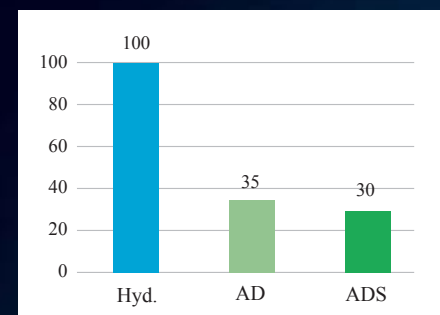
### Energy-saving performance

#### Reduction support for power consumption

Assistance for molding condition change to reduce power consumption

#### Comparison of the power consumption amount

※Hydraulic machine: 100 standards



Guiding the adjustment points  
Switches to the relevant setting screen by the Jump button

### Support for maintenance

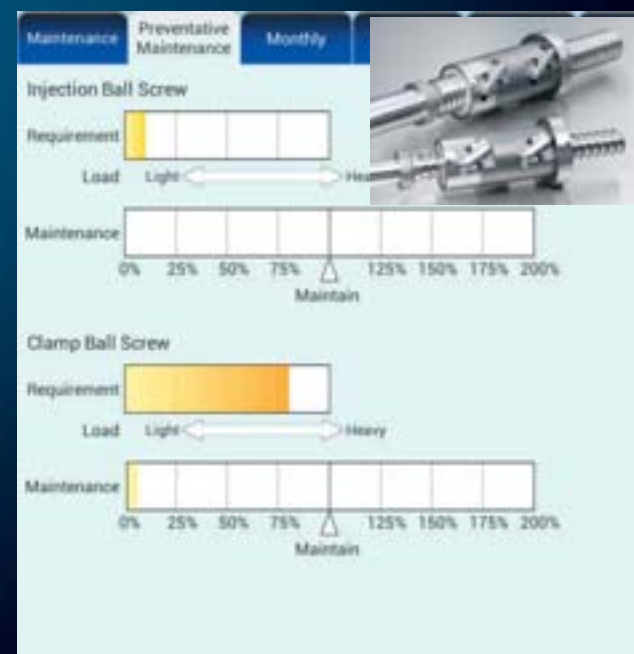
#### Periodical inspection

The periodical inspection items and the execution history can be checked on the controller.

Quarterly To three pasts		
No.	Plant	Date confirmed
Q-1	Ball screws	2014/12/15
Q-2	Automatic grease lubrication apparatus	2014/12/15
Q-3	Motor cooling fan	2014/12/15
Q-4	Control panel cooling fan	2014/12/15
Q-5	Mold thickness adjusting device	2014/12/15
Q-6	Heater band mounting bolts	
Q-7	Thermocouples	
Q-8	Grease hoses, lines	
Q-9	Linear guides	
Q-10	Hydraulic pressure hoses	
Q-11	Hydraulic cylinder	

#### Prediction maintenance

Condition monitor of ball screws based on the operating load.

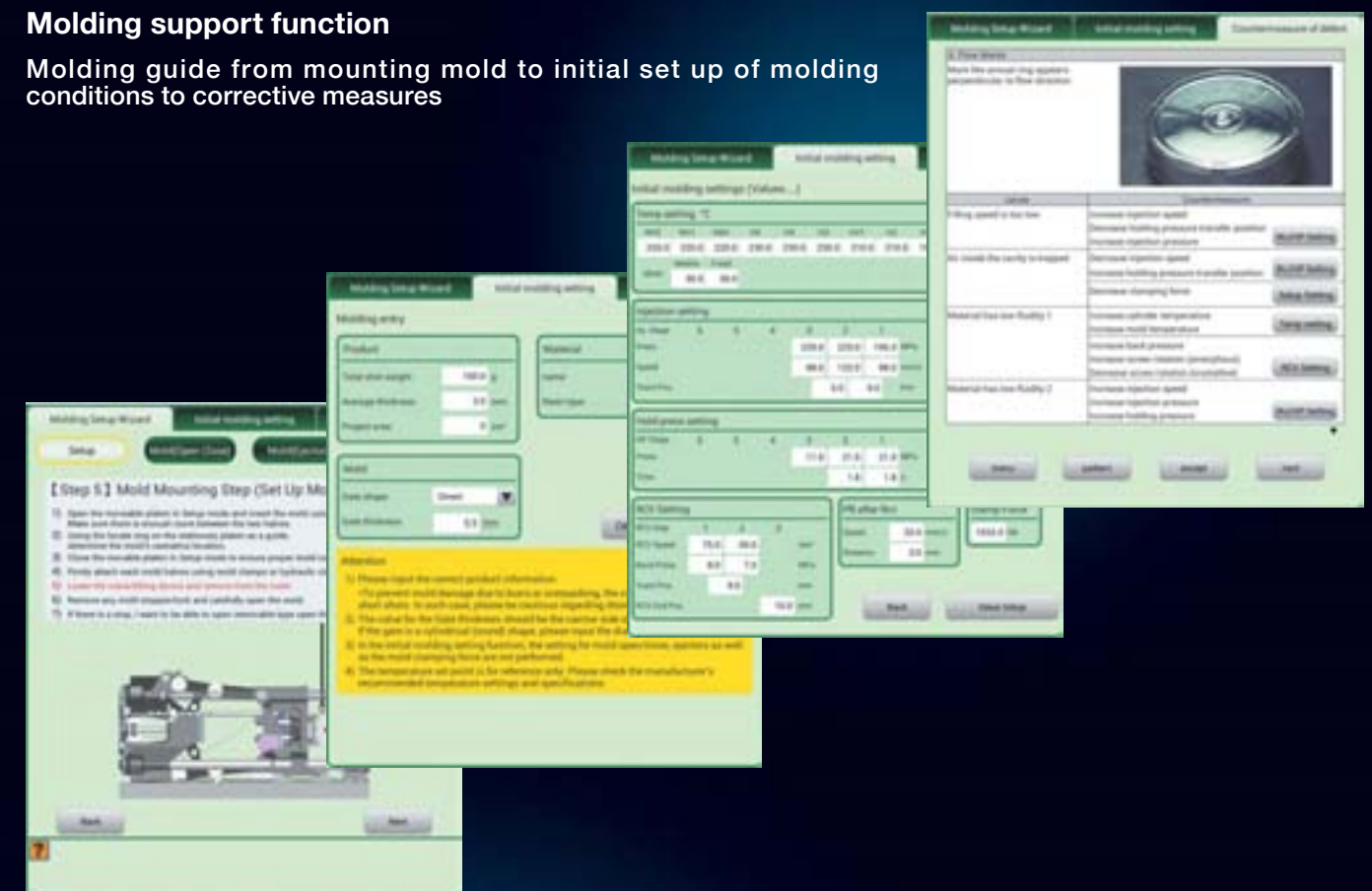


## Energy-saving performance and enriched JSW's support system

### Molding support

#### Molding support function

Molding guide from mounting mold to initial set up of molding conditions to corrective measures



### Enriched Hiroshima injection R&D center

#### Injection school

In preparation for a training lecture by JSW experienced staff. Multiple levels of training are available.

#### Hiroshima injection R&D center

Injection R&D center has newest machines to support customer's trial test of molds, material, molding process and etc.

