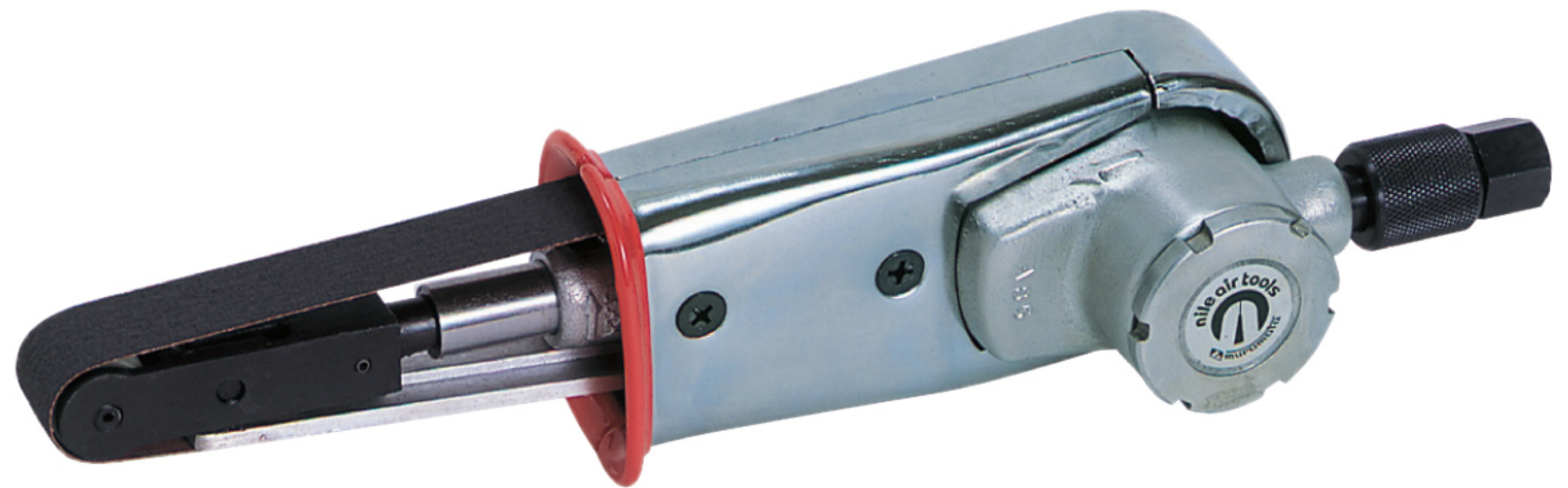


Mini Belters

MINI BELTERS

MB20



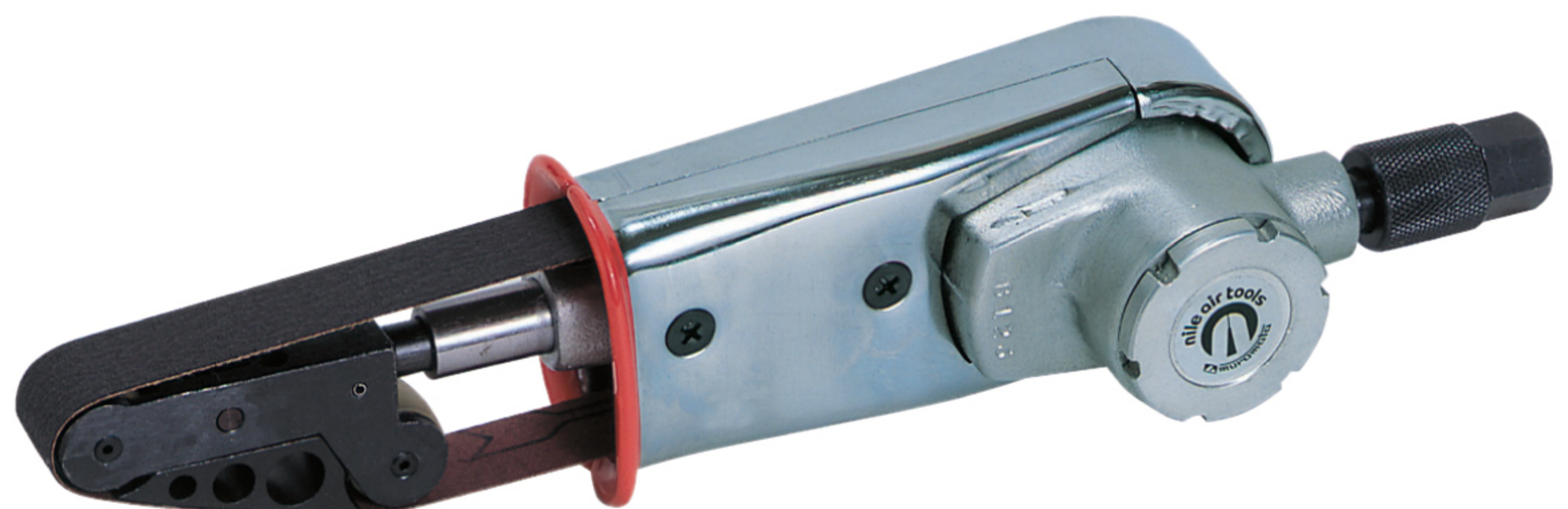
For use in limited places or for spot sanding

MB20 specification

Model	Length (mm)	Weight (g)	Air consumption (ℓ/min.)	Air pressure (MPa)	Free belt speed (m/min.)	Belt size (mm)	Remarks φ (mm)
MB20	290	930	300	0.5~0.6	2,200	20×500	Diameter of pulley φ21mm

MINI BELTERS

MB20S



3-point belt suspension makes sanding more smooth

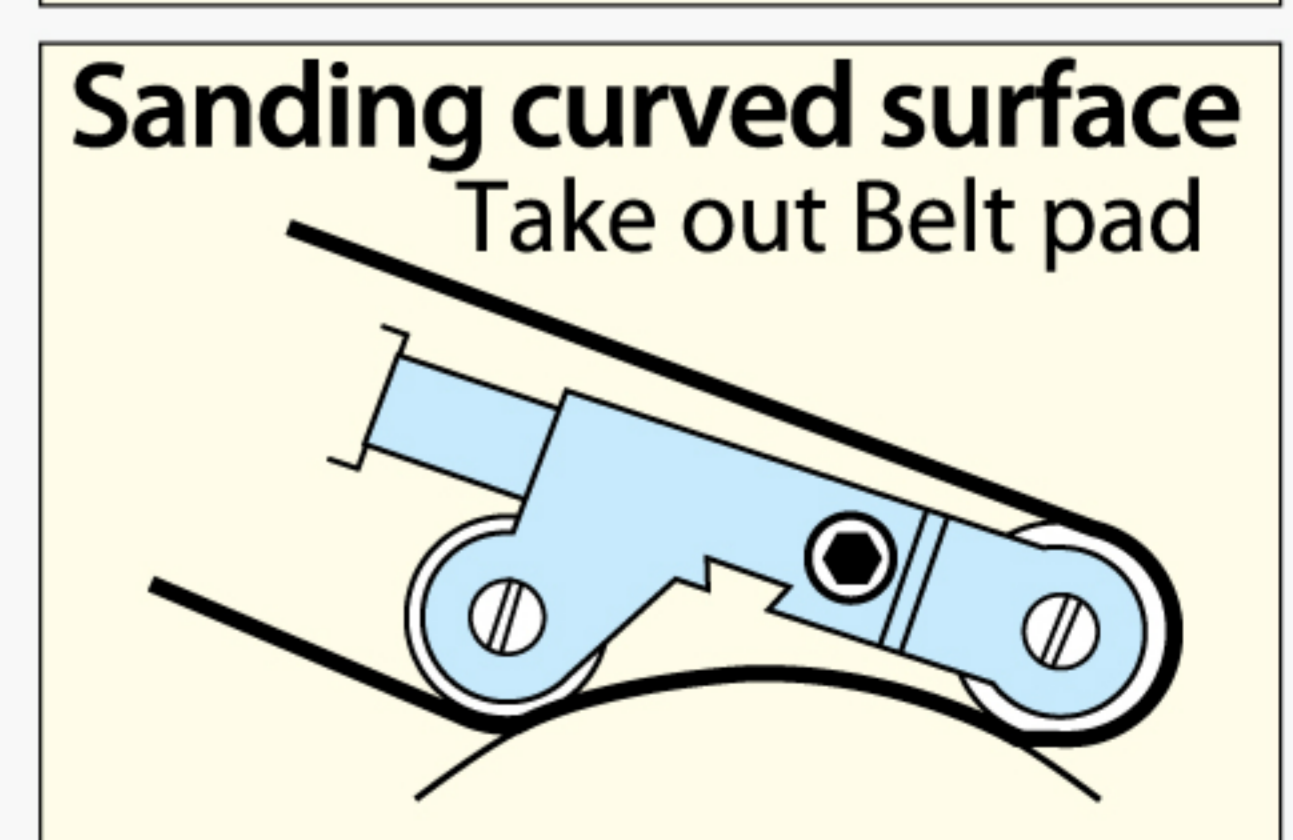
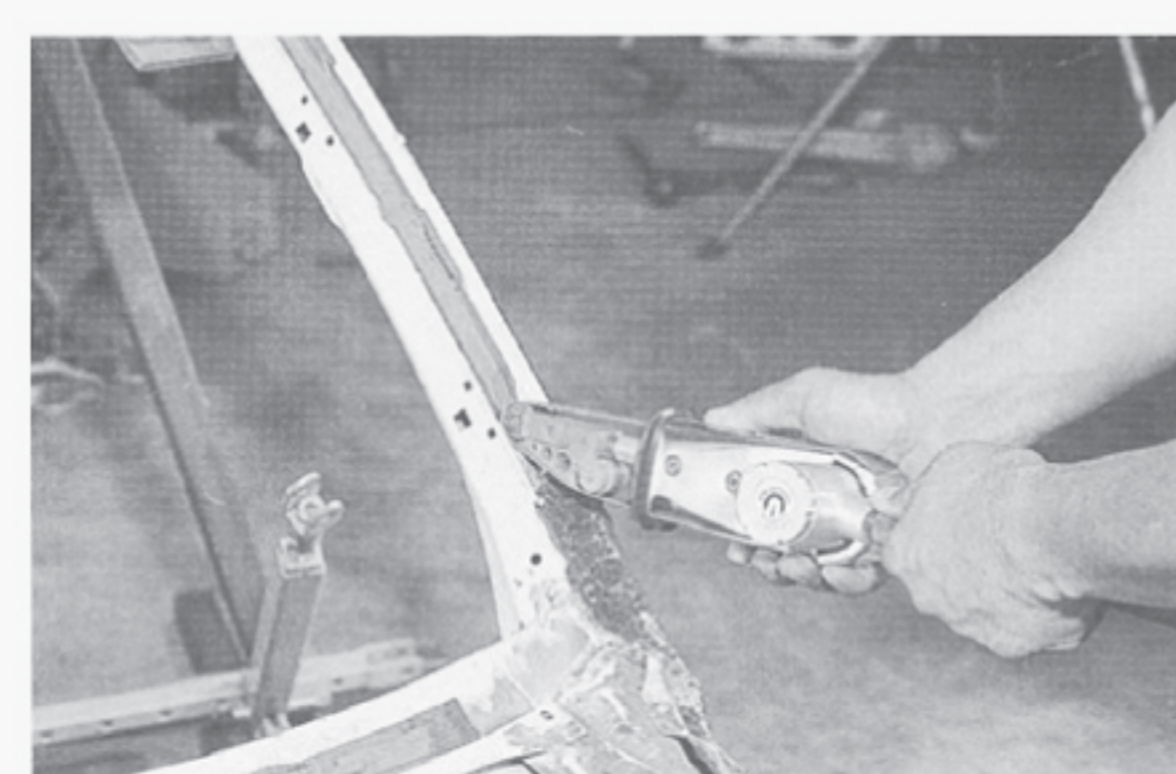
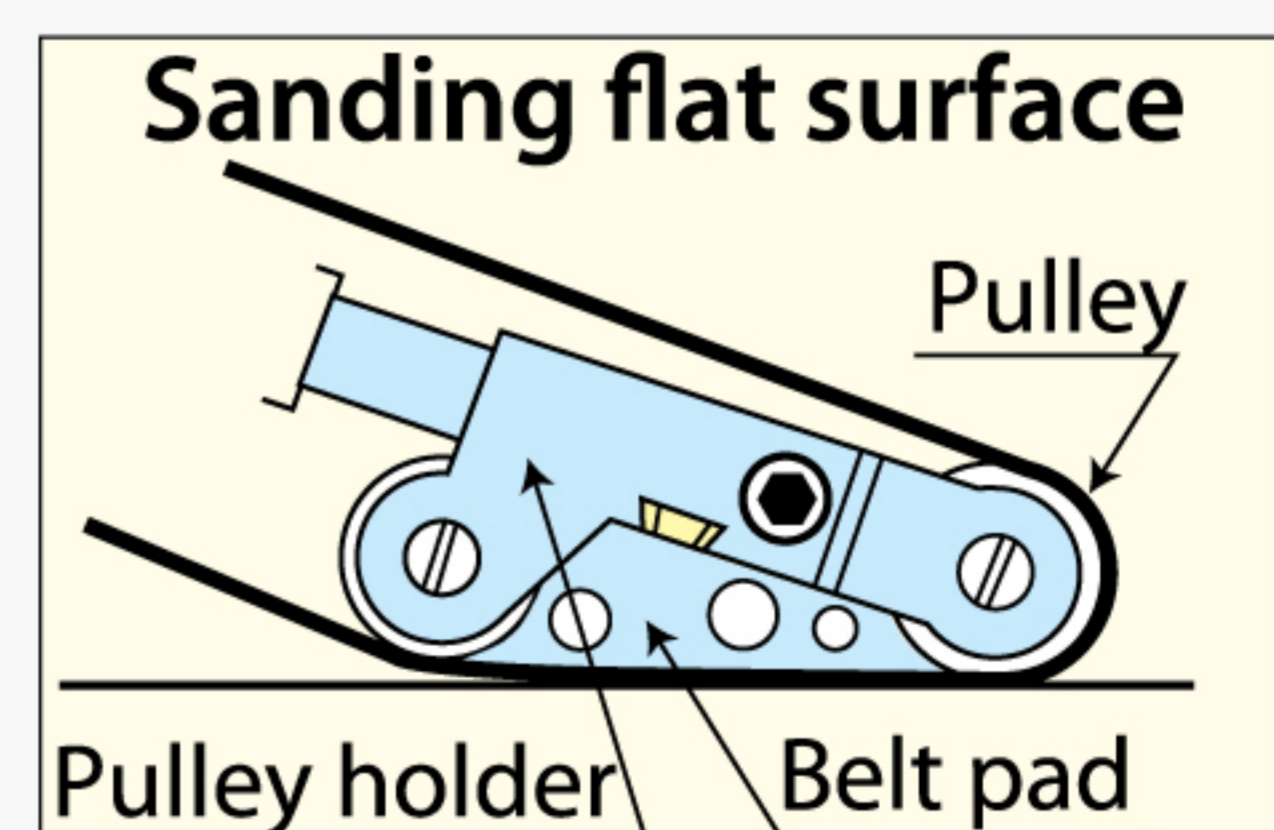
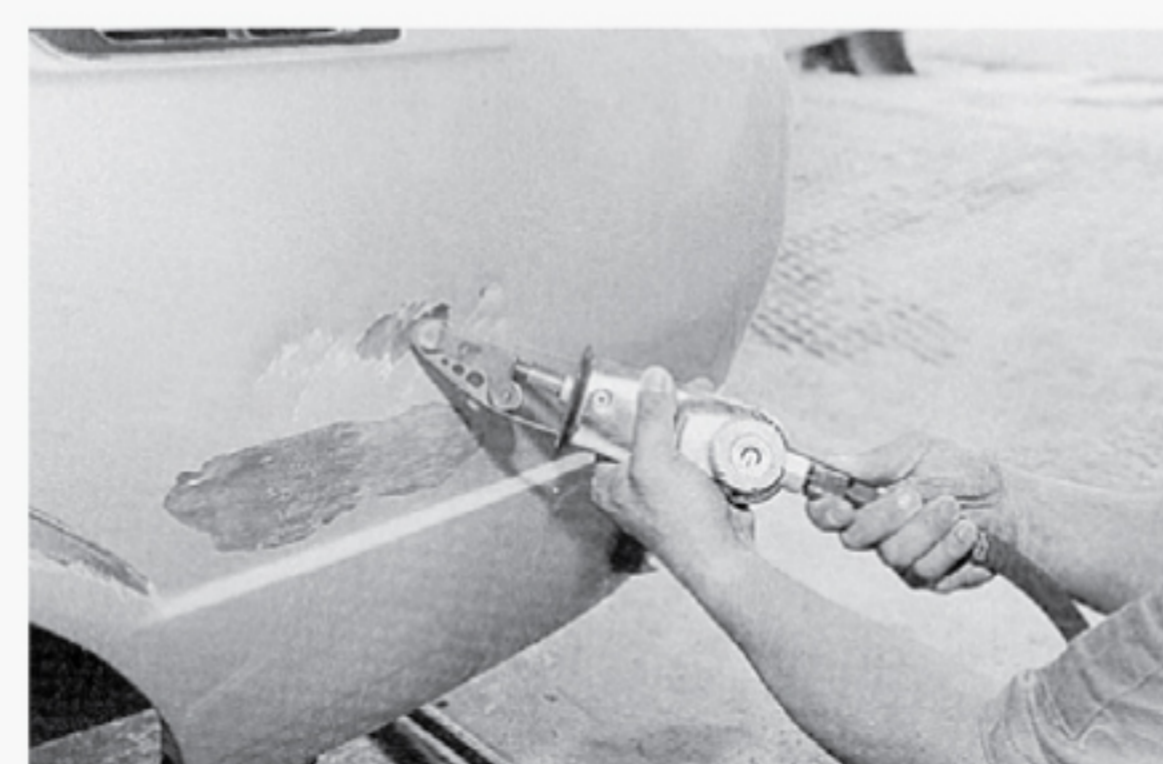
MB20S specification

Model	Length (mm)	Weight (g)	Air consumption (ℓ/min.)	Air pressure (MPa)	Free belt speed (m/min.)	Belt size (mm)	Remarks φ (mm)
MB20S	290	1,080	300	0.5~0.6	2,200	20×500	Diameter of pulley φ21mm

Product name	Model	Belt Size (mm)	Type
Belt (Per box 20pcs)	#40	20×520	MB20
	#60		MB20S
	#100		

● APPLICATIONS

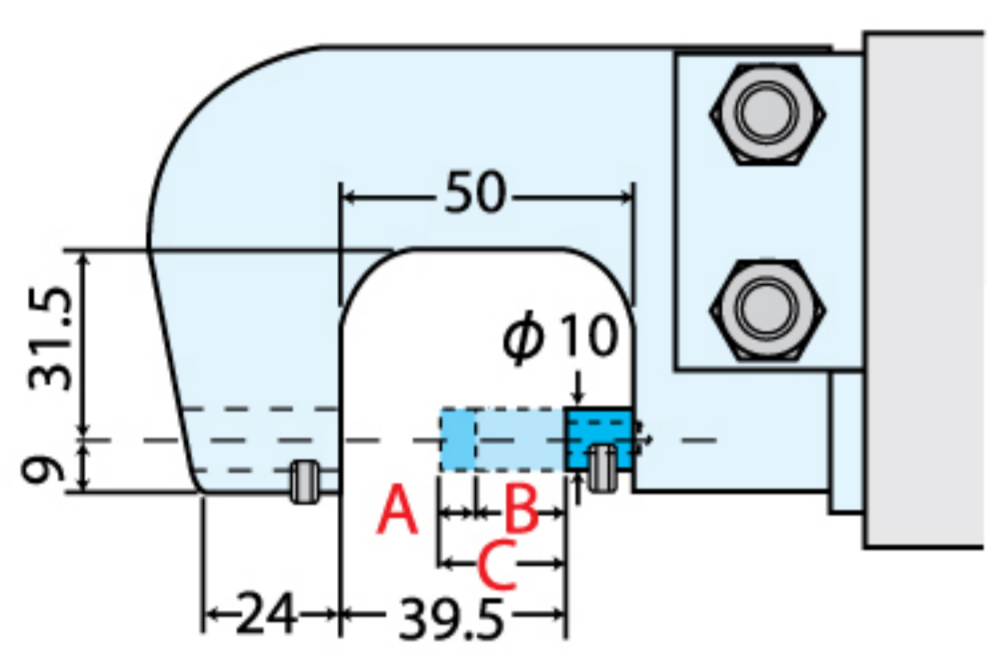
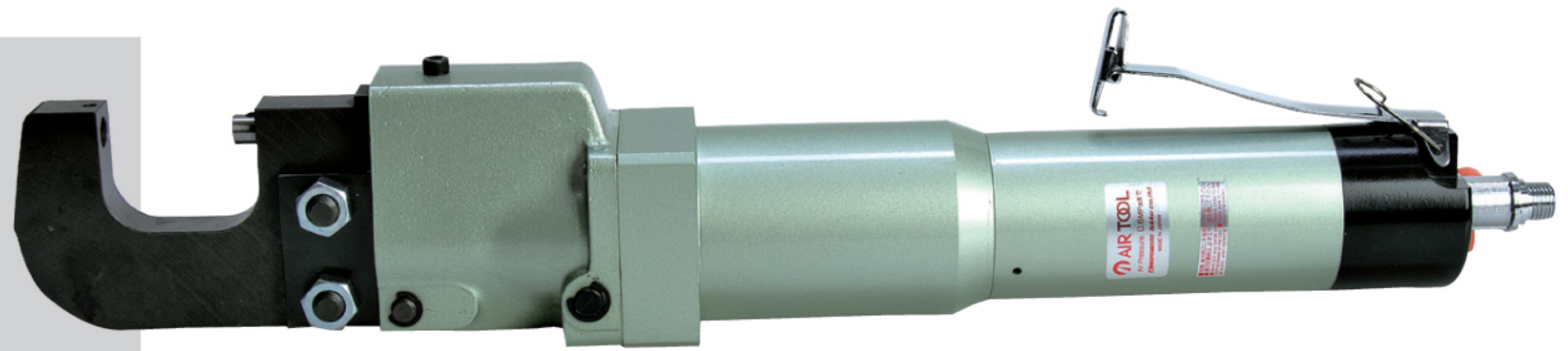
- ◆ Sanding for various auto-repair services such as...
 - Removing spot welding.
 - Removing paint off flat or curved surfaces.
 - Removing welding bead.
- ◆ Finishing wood work.
- ◆ Deburring small metal products.
- ◆ Removing rust.



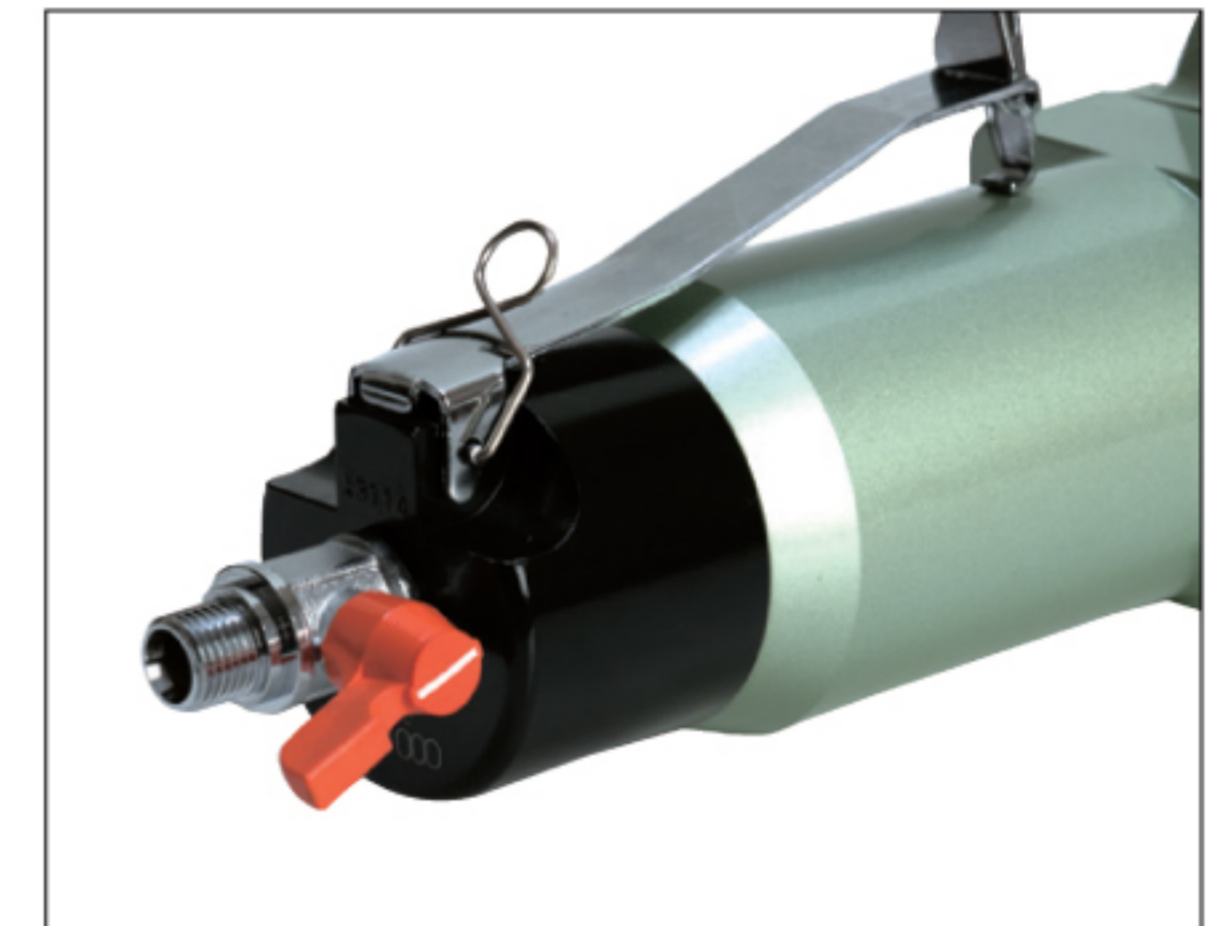
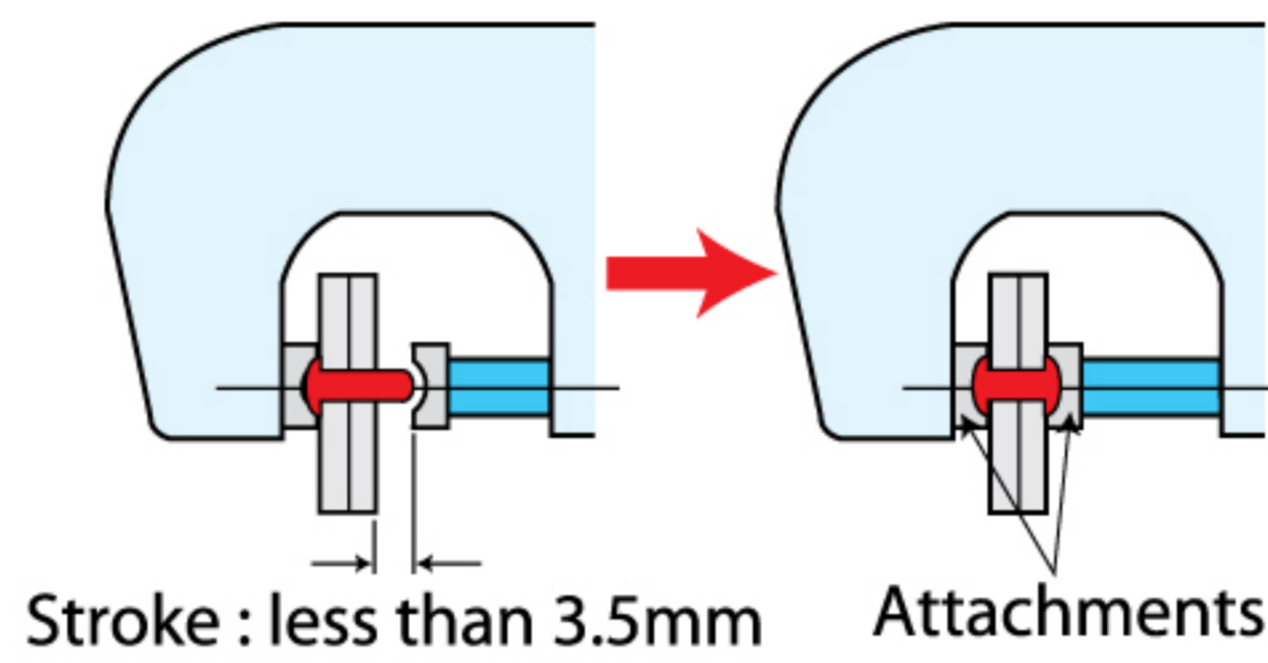
Air squeezers/Cable cutters/Air twister

AIR SQUEEZERS

GXT1000 GXT1200



A=3.5mm (pressure power generation zone)
 B = 17mm (quick projection zone)
 C = 20.5mm (overall stroke)
 ★ Attachments are optional and manufactured on demand.
 ★ Use a suitable die for punching.



GXT type specification

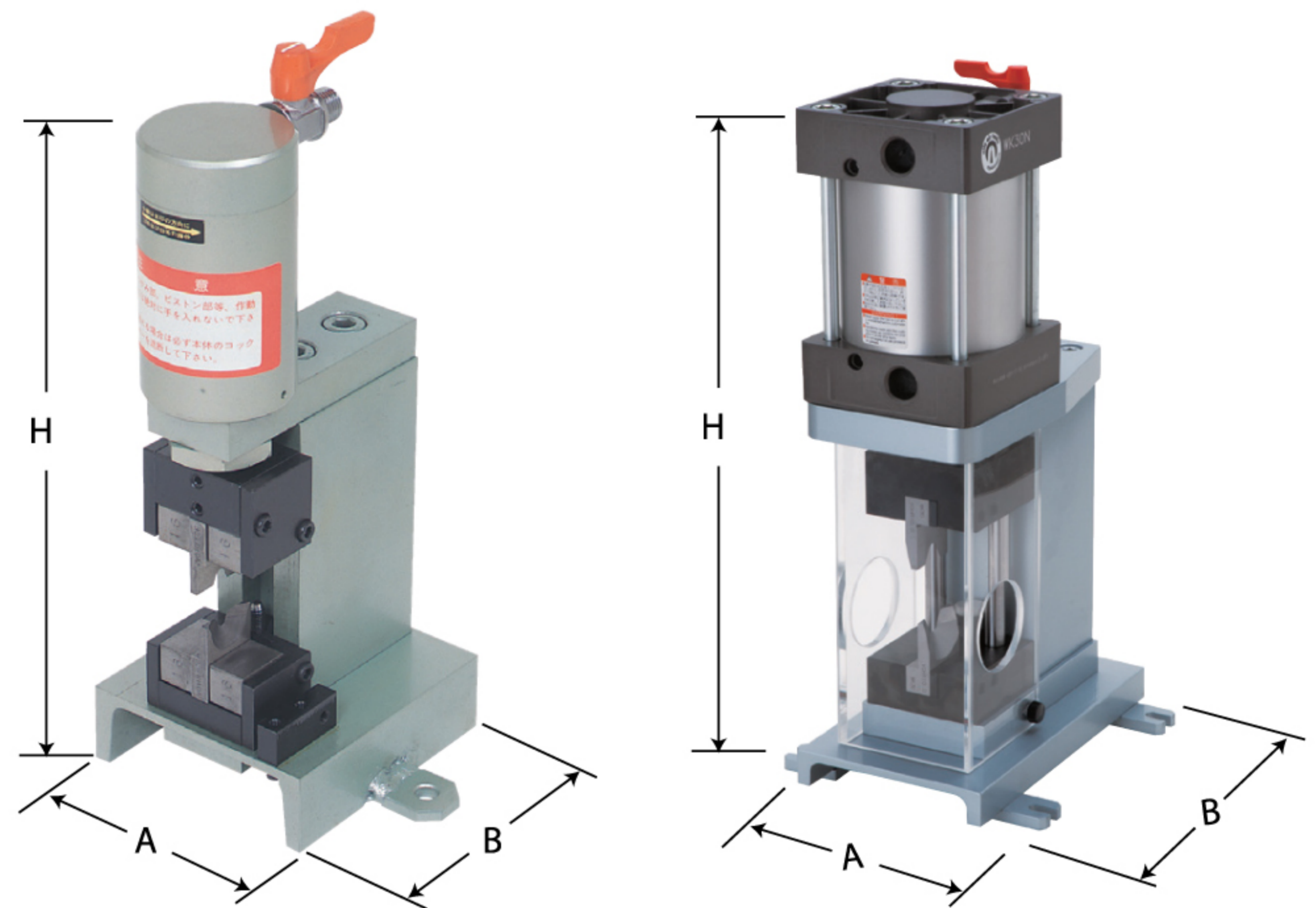
Model	Length (mm)	Weight (g)	Grip size ϕ (mm)	Air consumption (cm ³ /stroke)	Power N (approx.)	Air pressure (MPa)	Capacity (for reference)	
							Riveting	Punching holes
GXT1000	359	3,300	65	1,019	5,780	0.5~0.6	Steel rivet=less ϕ 2mm Aluminum rivet=less than ϕ 4mm	ϕ 4mm Holes (2mm Steel Plate)
GXT1200	472	3,800	56	1,715	8,800	0.5~0.6	Steel rivet=less ϕ 2mm Aluminum rivet=less than ϕ 5mm	ϕ 4mm Holes (3mm Steel Plate)

CABLE CUTTERS

WK Type

Cutting of iron plate. Cutting of nylon tube.
 By changing the blade, various cutting work can be done.

With safety cover



WK type specification

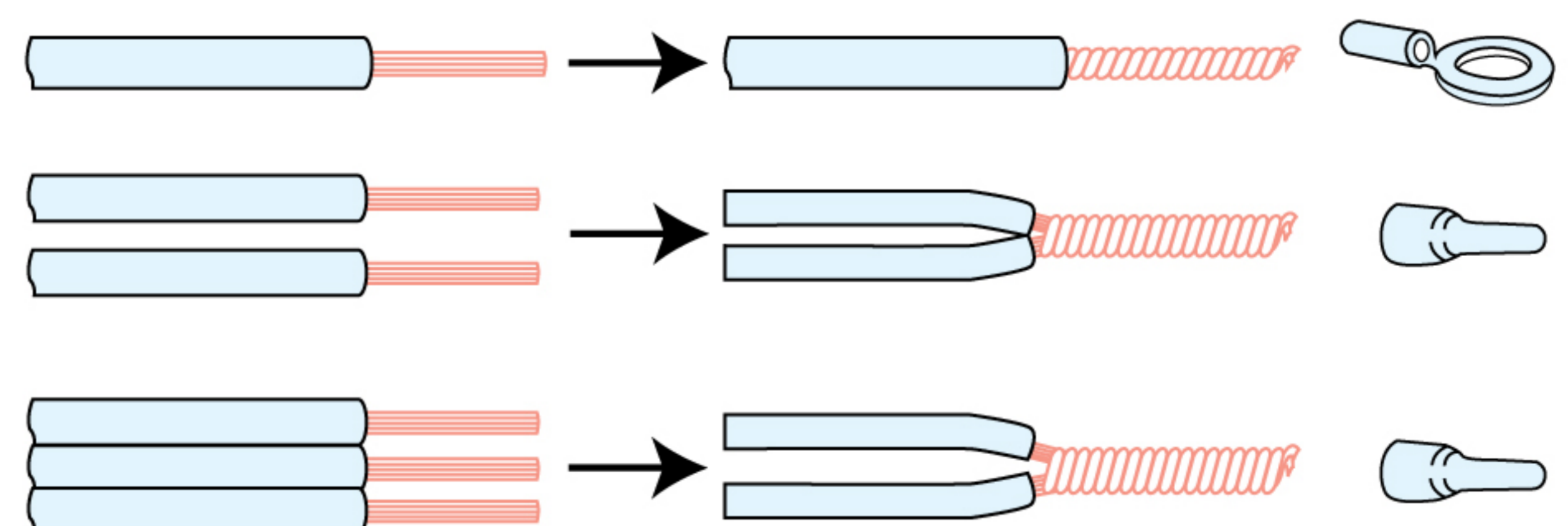
Model (less blade)	Weight (kg)	Air consumption (cm ³ /stroke)	Air pressure (MPa)	Dimensions (mm)			Blade	Cutting capacity (ϕ mm)
				A	B	H		
WK10	6	639	0.5~0.65	100	110	268.5	VOHR5	Cable : until 7mm
WK30N	21	5,000	0.5~0.65	125	216	394	VOHR10	Cable : until 30mm

AIR TWISTER

RC6



Easy to insert of Crimping terminal, Connection terminal and etc.



RC6 specification

Model	Length (mm)	Weight (g)	Grip size ϕ (mm)	Air consumption (cm ³ /stroke)	Rotations Speed (min)	Twist capacity
RC6	180	830	38	45	1,900	1~5